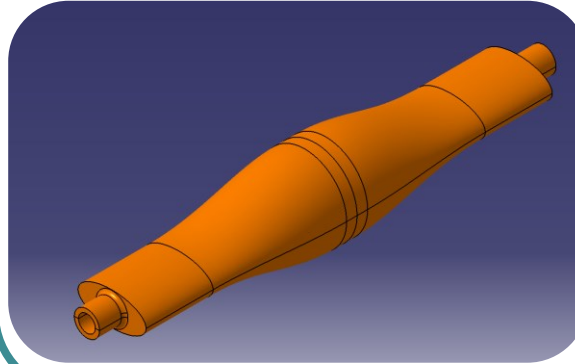


## Launching Hypersonic Flight

- Material for Extreme Environments ( $>2500^{\circ}\text{C}$ )
- Optimised Laminate Design
- Innovative Through-Thickness Reinforcement
- Precise & Repeatable Manufacture
- Reduced Cost for Equivalent Performance
- Scale for Large Volume Production

### Geometry



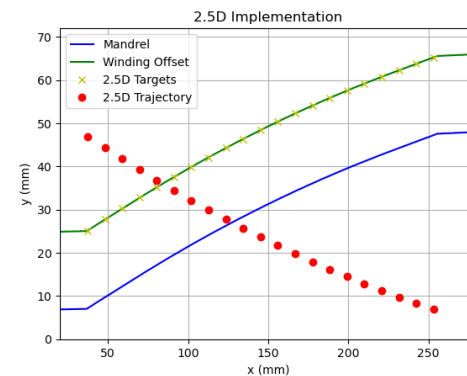
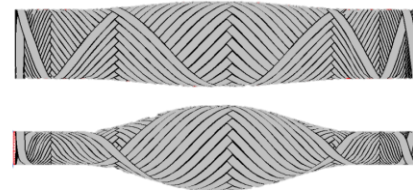
### Manufacture



### Prototype Component



### Design & Optimisation



### Potential Application

